

CRAFT ALLEY at GRIFF'S GARAGES

CHEESMAN PARK | 961 MARION STREET | FOR RENT



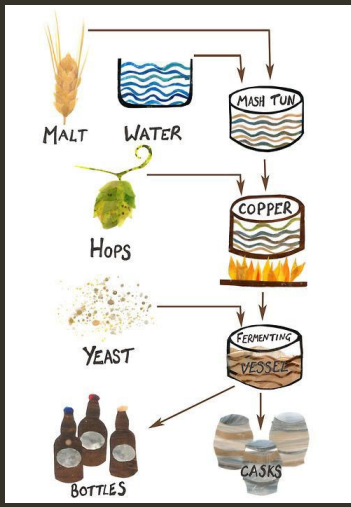
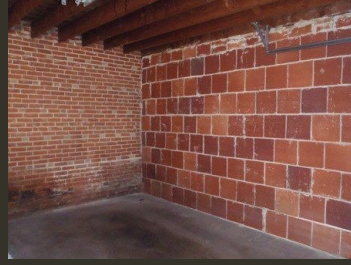
These urban garages are perfect for craft trades, storage, or medium to small vehicles. They feature high ceilings, exposed brick, electricity and locking garage doors and a well lit driveway

The garages are located on a quiet street in the heart of Cheesman Park and easily accessible from Washington Park, City Park, Cherry Creek, Capitol Hill and Downtown.

INSIDE STORY:

- 1 CAR GARAGE
- DIMENSIONS:
7' X 6" WIDE
6' X 10" TALL
17' X 2" DEEP
- LOCKS
- ELECTRICITY

(not all garages have electricity)



JENNIFER STEINERT
303-777-7460
BROKER | OWNER
Jennifer@distinctiveflats.com

www.DISTINCTIVEFLATS.com



ALL INFORMATION DEEMED RELIABLE BUT NOT GUARANTEED